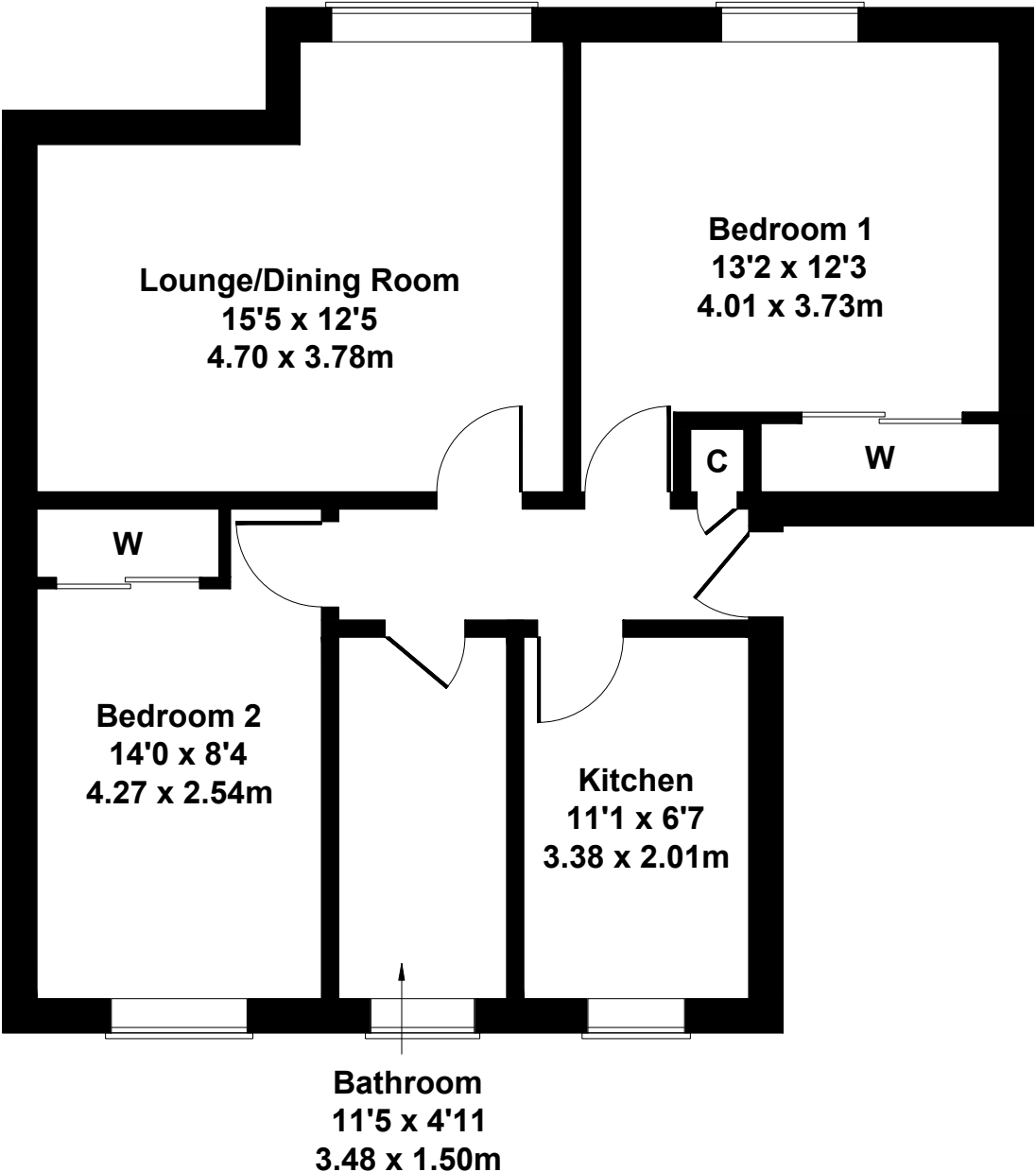


# Flat 3-1, 8 Church Street, Baillieston, Glasgow G69 7NU

Approximate Gross Internal Area  
657 sq ft - 61 sq m



**SKETCH PLAN FOR ILLUSTRATIVE PURPOSES ONLY**

All measurements walls, doors, windows, fittings and appliances, their sizes and locations, are approximate only. They cannot be regarded as being a representation by the seller, nor their agent.